



LEFT ELEVATION

Scale: 1/4"=1'-0"

CODE COMPLIANCE
 ICFD, LLC is an Equal Opportunity Employer. The International Brotherhood of Teamsters, Local 149N, is the exclusive bargaining agent for the employees of ICFD, LLC. The union represents all employees of ICFD, LLC, including those who are not currently members of the union. ICFD, LLC is an Equal Opportunity Employer. ICFD, LLC is an Equal Opportunity Employer. ICFD, LLC is an Equal Opportunity Employer.
CALL BEFORE YOU DIG
 PENNSYLVANIA ONE CALL SYSTEM, INC.
 Call BEFORE you dig
 1-800-242-1776
 www.pennonecall.org
 PA Law requires 3-working days Notice.



NOTICE DUTY OF COOPERATION
 ICFD, LLC assumes no liability for anything constructed from these plans and drawings. Release of these drawings contemplates further cooperation among the owner, contractors and the designer. Design and construction are complex. Although the designer and his associates performed their services with due care and diligence, they do not guarantee perfection. Communication is imperfect and every contingency is not anticipated. Any ambiguity or discrepancy discovered by the use of these drawings must be reported immediately to the designer. Failure to notify the designer, compounds misunderstanding and increases construction costs. A failure to cooperate by a simple notice to the designer will relieve the designer from responsibility for all consequences. Changes made from the drawings without the consent of the designer are unauthorized and relieve the designer of responsibility for all consequences arising out of such changes. Only qualified Designer, Engineer, Architect or Contractor should attempt to modify any portion of this design. All dimensions on these drawings shall be verified in field. Written dimensions have precedence over scaled dimensions. The builder or the contractor is responsible for all dimensions and conditions on the job. The designer must be notified by submission of shop drawings for his approval before proceeding with fabrication. Reproduction of these drawings, in any form, without written permission of the Designer, is prohibited.

IFPD, LLC
Design Group
 In consultation with:
ANA & Associates
 521 B LAWRENCE AVENUE
 ELLWOOD CITY, PA 16117
 (724) 752 - 9559

PROJECT: BEREZNIK RESIDENCE State Route 65, Ellwood City, PA 16117		
DRAWING TITLE: LEFT ELEVATION VIEW		
DRAWN BY: Tomislav Novosel	REVIEWED BY:	DRAWING NO.: A-2
DATE: 04-11-2007	SCALE: As Noted	SHEET: 3 OF 20



FRONT ELEVATION

Scale: 1/4" = 1'-0"

CODE COMPLIANCE
 The design is based on the 2008 International Residential Code for One and Two Family Dwellings, with amendments of Local Code Administration, which govern the construction under these drawings. It is the responsibility of the contractor to obtain current codes and regulations. CALL BEFORE YOU DIG
 PENNSYLVANIA ONE CALL SYSTEM, INC.
 Call BEFORE you dig
 1-800-242-1776
 www.pennonecall.org
 PA Law requires 3-working days Notice.



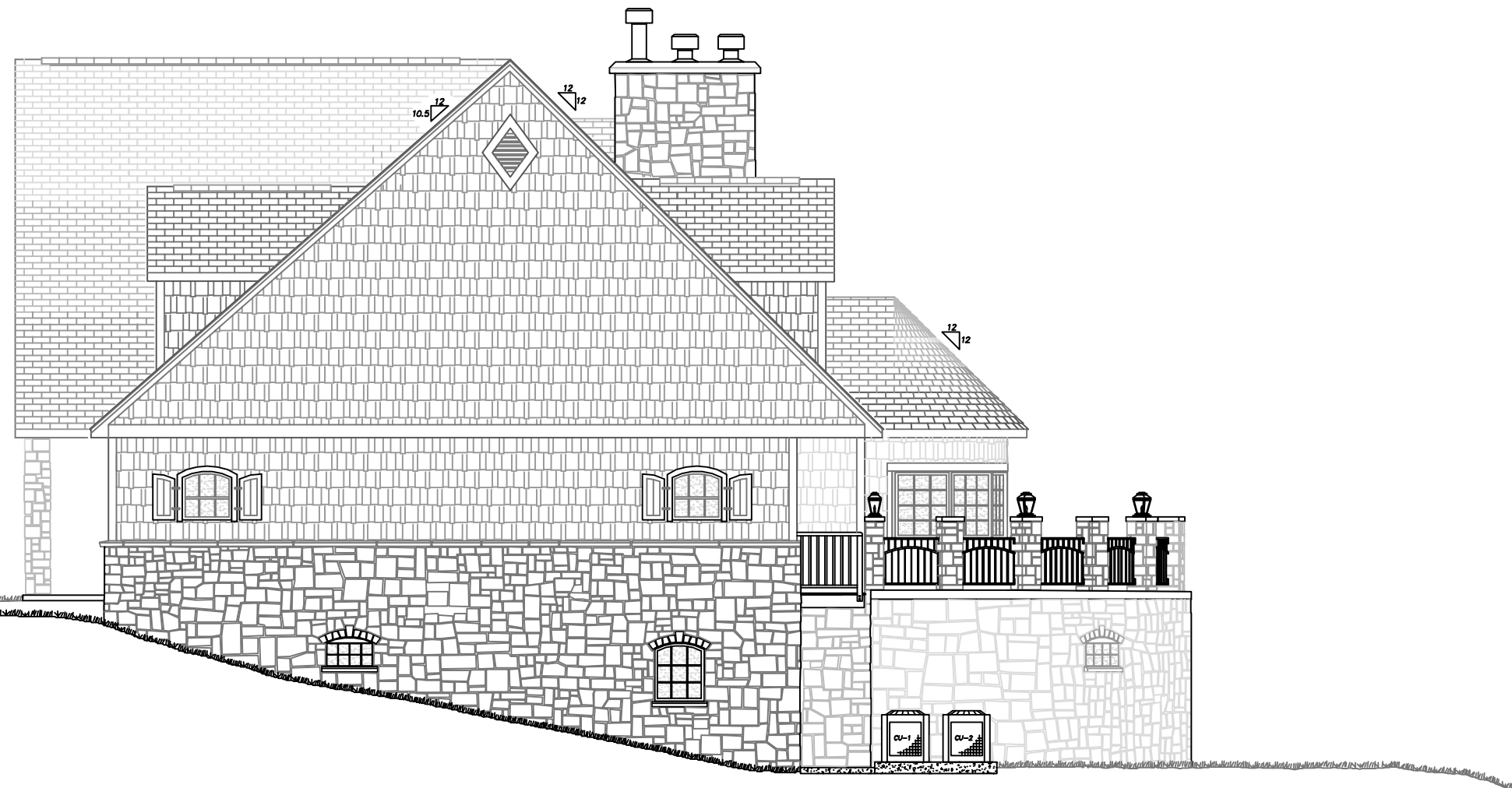
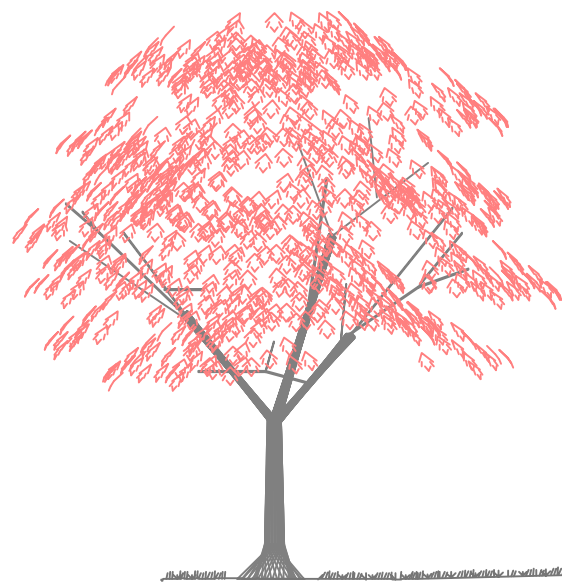
IFPD, LLC
Design Group
 In consultation with:
ANA & Associates
 521 B LAWRENCE AVENUE
 ELLWOOD CITY, PA 16117
 (724) 752 - 9559

PROJECT: **BEREZNIAK RESIDENCE**
 State Route 65, Ellwood City, PA 16117

DRAWING TITLE: **FRONT ELEVATION VIEW**

DRAWN BY: Tomislav Novosel	REVIEWED BY:	DRAWING NO.:
DATE: 04-11-2007	SCALE: As Noted	A-1
		SHEET: 2 of 20

NOTICE DUTY OF COOPERATION
 IFPD, LLC assumes no liability for anything constructed from these plans and drawings. Release of these drawings contemplates further cooperation among the owner, contractor and the designer. Design and construction are complex. Although the designer and his associates performed their services with due care and diligence, they do not guarantee perfection. Communication is imperfect and every contingency is not anticipated. Any ambiguity or discrepancy discovered by the use of these drawings must be reported immediately to the designer. Failure to notify the designer, compounds misunderstanding and increases construction costs. A failure to cooperate by a simple notice to the designer will relieve the designer from responsibility for all consequences. Changes made from the drawings without the consent of the designer are unauthorized and relieve the designer of responsibility for all consequences arising out of such changes. Only qualified Designer, Engineer, Architect or Contractor should attempt to modify any portion of this design.
 All dimensions on these drawings shall be verified in field. Written dimensions have precedence over scaled dimensions. The builder or the contractor is responsible for all dimensions and conditions on the job. The designer must be notified by submission of shop drawings for his approval before proceeding with fabrication.
 Reproduction of these drawings, in any form, without written permission of the Designer, is prohibited.



RIGHT ELEVATION

Scale: 1/4"=1'-0"

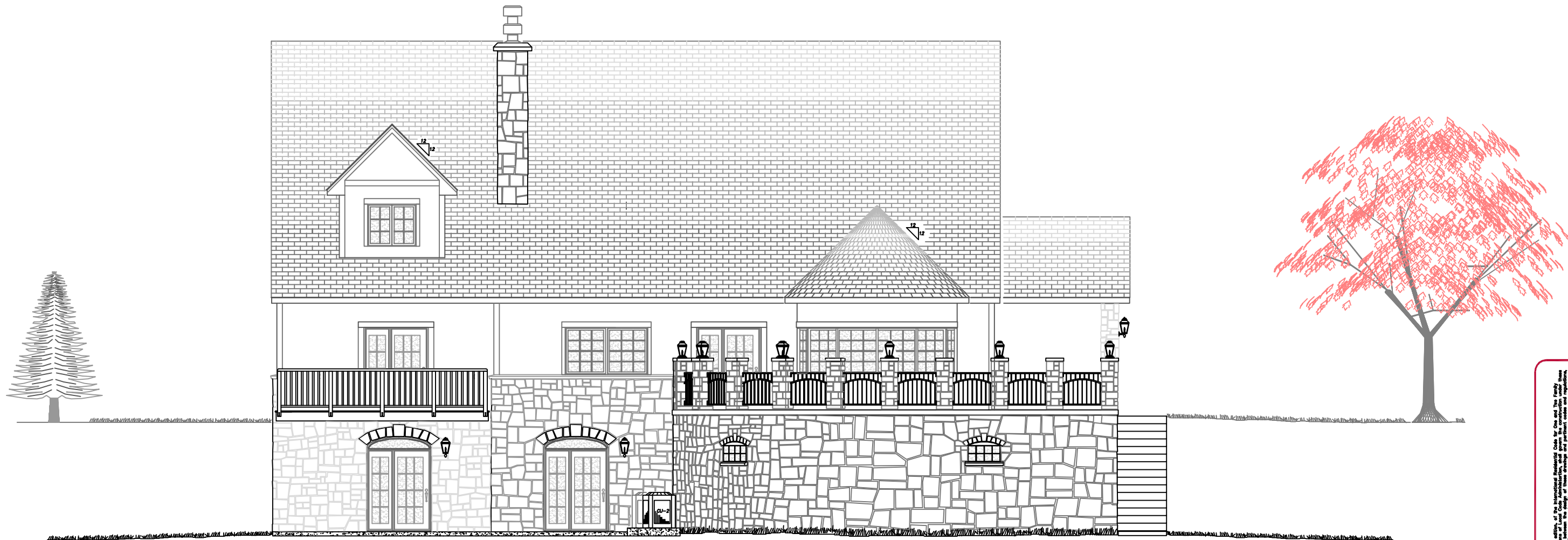
CODE COMPLIANCE
 Call your local office of the International Brotherhood of Plumbers, Pipefitters and Allied Trades Union Local 1000 for information on the Pennsylvania Uniform Plumbing Code and Regulations. The Uniform Plumbing Code is the minimum standard for plumbing construction.
 CALL BEFORE YOU DIG
 PENNSYLVANIA ONE CALL SYSTEM, INC.
 Call BEFORE you dig
 1-800-242-1776
 www.pennonecall.org
 PA Law requires 3-working days Notice.



NOTICE DUTY OF COOPERATION
 IFPD, LLC assumes no liability for anything constructed from these plans and drawings. Release of these drawings contemplates further cooperation among the owner, contractor and the designer. Design and construction are complex. Although the designer and his associates performed their services with due care and diligence, they do not guarantee perfection. Communication is imperfect and every contingency is not anticipated. Any ambiguity or discrepancy discovered by the use of these drawings must be reported immediately to the designer. Failure to notify the designer, compounds misunderstanding and increases construction costs. A failure to cooperate by a simple notice to the designer will relieve the designer from responsibility for all consequences. Changes made from the drawings without the consent of the designer are unauthorized and relieve the designer of responsibility for all consequences arising out of such changes. Only qualified Designer, Engineer, Architect or Contractor should attempt to modify any portion of this design.
 All dimensions on these drawings shall be verified in field. Written dimensions have precedence over scaled dimensions. The builder or the contractor is responsible for all dimensions and conditions on the job. The designer must be notified by submission of shop drawings for his approval before proceeding with fabrication.
 Reproduction of these drawings, in any form, without written permission of the Designer, is prohibited.

IFPD, LLC
Design Group
 In consultation with:
ANA & Associates
 521 B LAWRENCE AVENUE
 ELLWOOD CITY, PA 16117
 (724) 752 - 9559

PROJECT: BEREZNAK RESIDENCE State Route 65, Ellwood City, PA 16117		
DRAWING TITLE: RIGHT ELEVATION VIEW		
DRAWN BY: Tomislav Novosel	REVIEWED BY:	DRAWING NO.: A-3
DATE: 04-11-2007	SCALE: As Noted	SHEET: 4 of 20



REAR ELEVATION

Scale: 1/4" = 1'-0"



CODE COMPLIANCE
 IFC Building Code, 2003 Edition, of the International Building Code for One and Two Family Dwellings, with amendments of Local Code Administration, shall govern the construction unless otherwise indicated. These drawings are prepared under the provisions of the Pennsylvania Building Code and Regulations.
 CALL BEFORE YOU DIG
 PENNSYLVANIA ONE CALL SYSTEM, INC.
 Call BEFORE you dig
 1-800-242-1776
 www.pennocall.org
 PA Law requires 3-working days Notice.

NOTICE DUTY OF COOPERATION
 IFPD, LLC assumes no liability for anything constructed from these plans and drawings. Release of these drawings contemplates further cooperation among the owner, contractors and the designer. Design and construction are complex. Although the designer and his associates performed their services with due care and diligence, they do not guarantee perfection. Communication is imperfect and every contingency is not anticipated. Any ambiguity or discrepancy discovered by the use of these drawings must be reported immediately to the designer. Failure to notify the designer, compounds misunderstanding and increases construction costs. A failure to cooperate by a simple notice to the designer will relieve the designer from responsibility for all consequences. Changes made from the drawings without the consent of the designer are unauthorized and relieve the designer of responsibility for all consequences arising out of such changes. Only qualified Designer, Engineer, Architect or Contractor should attempt to modify any portion of this design.
 All dimensions on these drawings shall be verified in field. Written dimensions have precedence over scaled dimensions. The builder or the contractor is responsible for all dimensions and conditions on the job. The designer must be notified by submission of shop drawings for his approval before proceeding with fabrication.
 Reproduction of these drawings, in any form, without written permission of the Designer, is prohibited.

IFPD, LLC
Design Group
 In consultation with:
ANA & Associates
 521 B LAWRENCE AVENUE
 ELLWOOD CITY, PA 16117
 (724) 752 - 9559

PROJECT: BEREZNIK RESIDENCE State Route 65, Ellwood City, PA 16117		
DRAWING TITLE: REAR ELEVATION VIEW		
DRAWN BY: Tomislav Novosel	REVIEWED BY:	DRAWING NO.: A-4
DATE: 04-11-2007	SCALE: As Noted	SHEET: 5 of 20