

LEFT ELEVATION VIEW

Scale: 1/4" = 1'-0"



NOTICE DUTY OF COOPERATION

IFPD, LLC assumes no liability for anything constructed from these plans and drawings. Release of these drawings contemplates further cooperation among the owner, contractors and the designer. Design and construction are complex. Although, the designer and his associates performed their services with due care and diligence, they do not guarantee perfection. Communication is imperfect and every contingency is not anticipated. Any ambiguity or discrepancy discovered by the use of these drawings must be reported immediately to the designer. Failure to notify the designer, constitutes misunderstanding and increases construction costs. A failure to cooperate by a timely notice to the designer will relieve the designer from responsibility for all consequences. Changes made from the drawings without the consent of the designer are unauthorized and relieves the designer of responsibility for all consequences arising out of such changes. Only qualified Designer, Engineer, Architect or Contractor should attempt to modify any portion of this design. All dimensions on these drawings shall be verified in field. Written dimensions have precedence over scaled dimensions. The builder or the contractor is responsible for all dimensions and conditions on the job. The designer must be notified by submission of shop drawings for his approval before proceeding with fabrication. Reproduction of these drawings, in any form, without written permission of the Designer, is prohibited.

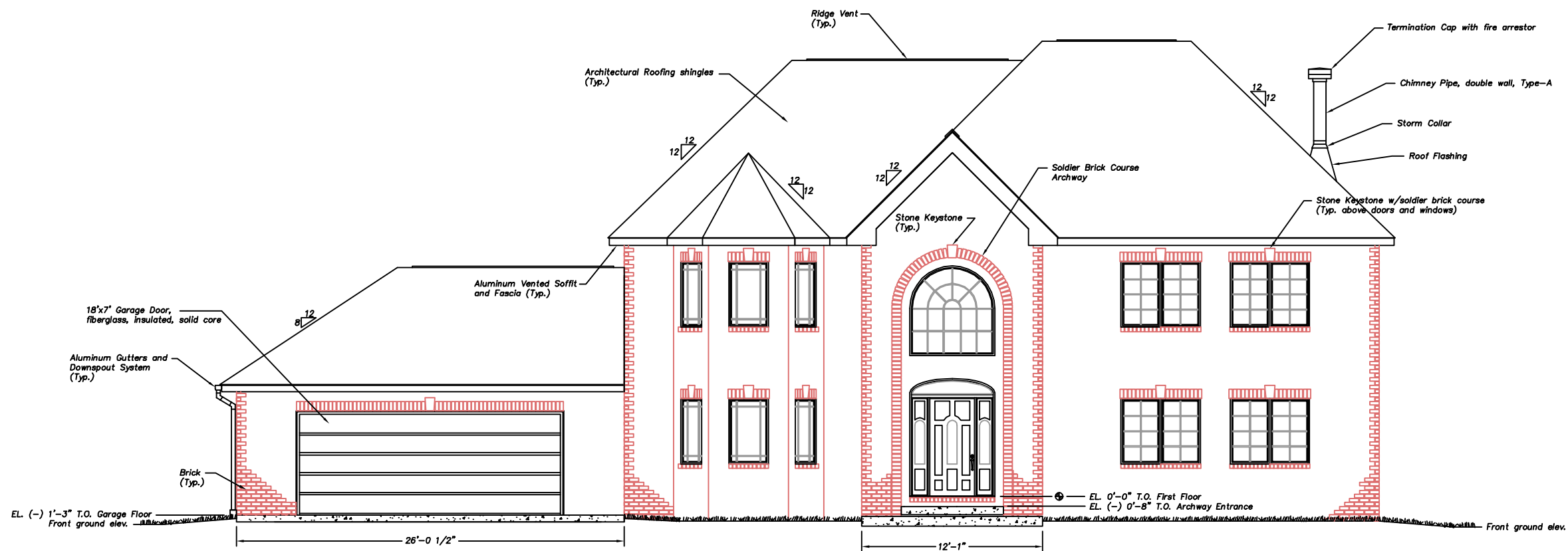
CODE COMPLIANCE
 The designer is not responsible for the interpretation of the International Building Code by the user. The user shall be responsible for obtaining the applicable local codes and regulations. Drawings with possible modifications of local codes, amendments, and other construction codes and regulations, shall be the responsibility of the user. The designer is not responsible for the interpretation of these drawings and pertinent codes and regulations.
 CALL BEFORE YOU DIG
 PENNSYLVANIA ONE CALL SYSTEM, INC.
 800-800-8000
 www.pennonecall.org
 PA Law requires 3-working days Notice.

IFPD, LLC
Design Group
 In consultation with:
AAA & Associates
 521 B LAWRENCE AVENUE
 ELLWOOD CITY, PA 16117
 (724) 752 - 9559

PROJECT: **BUZARD RESIDENCE**
 Grandview Road, Ellwood City, PA 16117

DRAWING TITLE: **LEFT ELEVATION VIEW**

DRAWN BY: Tomislav Novosel	REVIEWED BY:	DRAWING NO.: A-2
DATE: 03-10-2005	SCALE: As Noted	SHEET: 2 OF 7



FRONT ELEVATION VIEW

Scale: 1/4" = 1'-0"

CODE COMPLIANCE
 The drawings are prepared in accordance with the International Residential Code for One and Two Family Dwellings with possible modifications of Local Code Administration, and govern the construction and/or installation of the work shown. It is the responsibility of the contractor to obtain the applicable codes and regulations. In the event of a conflict between the drawings and the applicable codes and regulations, the drawings shall govern.
 CALL BEFORE YOU DIG
 PENNSYLVANIA ONE CALL SYSTEM, INC.
 800-486-6349
 www.pennacall.org
 PA Law requires 3-working days Notice.

NOTICE DUTY OF COOPERATION
 IFPD, LLC assumes no liability for anything constructed from these plans and drawings. Release of these drawings contemplates further cooperation among the owner, contractor and the designer. Design and construction are complex. Although, the designer and his associates performed their services with due care and diligence, they do not guarantee perfection. Communication is important and every contingency is not anticipated. Any ambiguity or discrepancy discovered by the use of these drawings must be reported immediately to the designer. Failure to notify the designer, constitutes misunderstanding and increases construction costs. A failure to cooperate by a timely notice to the designer will relieve the designer from responsibility for all consequences. Changes made from the drawings without the consent of the designer are unauthorized and relieves the designer of responsibility for all consequences arising out of such changes. Only qualified Designer, Engineer, Architect or Contractor should attempt to modify any portion of this design.
 All dimensions on these drawings shall be verified in field. Written dimensions have precedence over scaled dimensions. The builder or the contractor is responsible for all dimensions and conditions on the job. The designer must be notified by submission of shop drawings for his approval before proceeding with fabrication.
 Reproduction of these drawings, in any form, without written permission of the Designer, is prohibited.



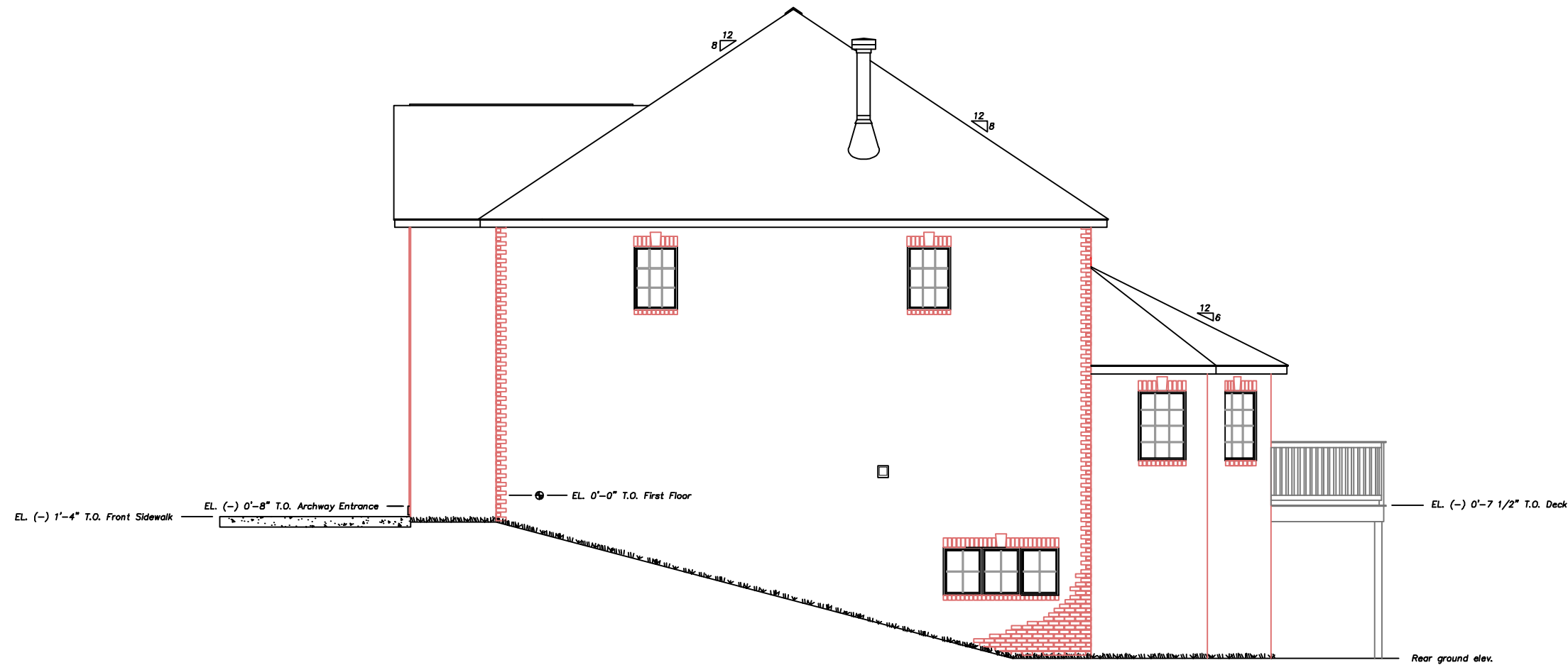
IFPD, LLC
Design Group

In consultation with:
ARA & Associates
 521 B LAWRENCE AVENUE
 ELLWOOD CITY, PA 16117
 (724) 752 - 9559

PROJECT: **BUZARD RESIDENCE**
 Grandview Road, Ellwood City, PA 16117

DRAWING TITLE: **FRONT ELEVATION VIEW**

DRAWN BY: Tomislav Novosel	REVIEWED BY:	DRAWING NO.: A-1
DATE: 03-10-2005	SCALE: As Noted	SHEET: 1 OF 7



RIGHT ELEVATION VIEW

Scale: 1/4"=1'-0"



NOTICE DUTY OF COOPERATION

IFPD, LLC assumes no liability for anything constructed from these plans and drawings. Release of these drawings contemplates further cooperation among the owner, contractors and the designer. Design and construction are complex. Although, the designer and his associates performed their services with due care and diligence, they do not guarantee perfection. Communication is important and every contingency is not anticipated. Any ambiguity or discrepancy discovered by the use of these drawings must be reported immediately to the designer. Failure to notify the designer, constitutes misunderstanding and increases construction costs. A failure to cooperate by a timely notice to the designer will relieve the designer from responsibility for all consequences. Changes made from the drawings without the consent of the designer are unauthorized and relieves the designer of responsibility for all consequences arising out of such changes. Only qualified Designer, Engineer, Architect or Contractor should attempt to modify any portion of this design. All dimensions on these drawings shall be verified in field. Written dimensions have precedence over scaled dimensions. The builder or the contractor is responsible for all dimensions and conditions on the job. The designer must be notified by submission of shop drawings for his approval before proceeding with fabrication. Reproduction of these drawings, in any form, without written permission of the Designer, is prohibited.

CODE COMPLIANCE
 The designer has reviewed the International Residential Code for One and Two Family Dwellings with possible modifications of Local Code amendments, and given the construction method shown in these drawings, the designer is not responsible for the construction of these drawings and pertinent codes and regulations.
 CALL BEFORE YOU DIG
 PENNSYLVANIA ONE CALL SYSTEM, INC.
 800-485-8500
 www.pennacall.org
 PA Law requires 3-working days Notice.

IFPD, LLC Design Group		In consultation with: AAA & Associates
		521 B LAWRENCE AVENUE ELLWOOD CITY, PA 16117 (724) 752 - 9559
PROJECT: BUZARD RESIDENCE Grandview Road, Ellwood City, PA 16117		
DRAWING TITLE: RIGHT ELEVATION VIEW		
DRAWN BY: Tomislav Novosel	REVIEWED BY:	DRAWING NO.: A-3
DATE: 03-10-2005	SCALE: As Noted	SHEET: 3 OF 7



REAR ELEVATION VIEW

Scale: 1/4" = 1'-0"

CODE COMPLIANCE
 The drawings are prepared in accordance with the International Residential Code for One and Two Family Dwellings with possible modifications of Local Code Administration, and govern the construction and use of the building. It is the responsibility of the contractor to obtain the applicable code and permit codes and regulations. CALL BEFORE YOU DIG
 PENNSYLVANIA ONE CALL SYSTEM, INC.
 800-850-8500
 www.pennacall.org
 PA Law requires 3-working days Notice.

NOTICE DUTY OF COOPERATION
 IFPD, LLC assumes no liability for anything constructed from these plans and drawings. Release of these drawings contemplates further cooperation among the owner, contractors and the designer. Design and construction are complex. Although, the designer and his associates performed their services with due care and diligence, they do not guarantee perfection. Communication is imperfect and every contingency is not anticipated. Any ambiguity or discrepancy discovered by the use of these drawings must be reported immediately to the designer. Failure to notify the designer, constitutes misunderstanding and increases construction costs. A failure to cooperate by a timely notice to the designer will relieve the designer from responsibility for all consequences. Changes made from the drawings without the consent of the designer are unauthorized and relieves the designer of responsibility for all consequences arising out of such changes. Only qualified Designer, Engineer, Architect or Contractor should attempt to modify any portion of this design. All dimensions on these drawings shall be verified in field. Written dimensions have precedence over scaled dimensions. The builder or the contractor is responsible for all dimensions and conditions on the job. The designer must be notified by submission of shop drawings for his approval before proceeding with fabrication. Reproduction of these drawings, in any form, without written permission of the Designer, is prohibited.



IFPD, LLC
Design Group

In consultation with:
ARA & Associates
 521 B LAWRENCE AVENUE
 ELLWOOD CITY, PA 16117
 (724) 752 - 9559

PROJECT: BUZARD RESIDENCE Grandview Road, Ellwood City, PA 16117		
DRAWING TITLE: REAR ELEVATION VIEW		
DRAWN BY: Tomislav Novosel	REVIEWED BY:	DRAWING NO.: A-4
DATE: 03-10-2005	SCALE: As Noted	SHEET: 4 OF 7